



North West SEND Regional Network

Delivery plan: v5 – 24.4.19

Regional co-ordinator details (for enquiries about this delivery plan):

Name of local authorities	Oldham, St Helens & Trafford			
Budget holder	Oldham - Civic Centre, West Street, Oldham OL1 1UT			
Key contacts	<p>Dr Cathy Hamer NW SEND Regional network co-ordinator Tel: 0778 357 7284</p> <p>Email: cwh01@hotmail.co.uk</p>	<p>Shirley Woods-Gallagher AD SEND, Oldham</p> <p>Email: s.woods-gallagher@oldham.gov.uk</p>	<p>Sharon Fryer Assistant Director Integrated Children's Health St Helens</p> <p>Email: sharonfryer@sthelens.gov.uk</p>	<p>Karen Samples Director Education Standards, Quality and Performance</p> <p>Email: Karen.samples@trafford.gov.uk</p>

Steering group:

Michael Kemp (Chair)	Head of children & young people with additional needs service, Rochdale	Michael.kemp@rochdale.gov.uk	01706 925123/ 07812221326
Sharon Fryer	AD Integrated Children's Health	sharonfryer@sthelens.gov.uk	01744 671037
Shirley Woods-Gallagher	AD SEND	s.woods-gallagher@oldham.gov.uk	0161 770 3150
Susan Hayward	SEND lead, Blackburn with Darwen	Susan.hayward@blackburn.gov.uk	01254 6665665
Julie Hicklin	SEND lead, Manchester	j.hicklin@manchester.gov.uk	07508 783921
Karen Gleave	SEND lead, Liverpool	Karen.gleave@liverpool.gov.uk	07734 483459
Karen Samples	Director Education Standards, Quality and Performance, Trafford	karen.samples@trafford.gov.uk	0161 911 8686 / 912 5100 07725 070714
Angela Steadman	NW SENDIASS rep. 1	angela.steadman@cheshirewestandchester.gov.uk	0782 4457011
Debbie Wood	NW SENDIASS rep. 2	debbie.wood@tameside.gov.uk	0161 342 3047 07974 838906
Michelle Morris	DCO, Salford	Michelle.morris@srft.nhs.uk	0161 206 2519
Julie Hoodless	DCO, St Helens	Julie.hoodless2@sthelensccg.nhs.uk	01744 673212 07824 521130
Justine Bailey	Trafford PCF	justine.bailey@traffordparentsforum.org	07437413592/0161 872 0183
Kath Bromfield	NWNNPCF Rep	northwest@nnpf.org.uk	07717 872 586
Kate Hurn	Contact	Kate.hurn@contact.org.uk	07458045694
Andrea Greenwood	POINT	Andrea@point-send.co.uk	
Erica Douglas-Osborn Izzy Wood	Bury STARS	E.DouglasOsborn@bury.gov.uk issy-92@hotmail.com	0161 2536406
Barry Jones	PfA	Barry.Jones@ndti.org.uk	
Lucy Charters	NW PEP Rep	Lucy.charters@rochdale.gov.uk	01706 926400
Cathy Hamer	NW SEND Regional Network co-ordinator	cwh01@hotmail.co.uk	0778 357 7284

NW Network Consortium members

DfE SEND Advisers for NW – Cath Hitchen & Elaine Baulcombe

Sector led improvement team link – Paul Bunker

Aims of the SEND Regional network:

To embed a clear and sustainable strategy for partnership working with local authorities and with the main stakeholder groups across the region; including education settings for ages 0-25; health services; parent carers; Parent Carer Forums and children and young people across the 0-25 age range

To share good practice and offer targeted support on identified priority themes

To co-ordinate peer support activities including regional events, workshops, action learning sets, sub-regional groups and learning networks.

Principles of the SEND Regional network:

1. The network will actively engage in partnership working across all stakeholders.
2. The network will promote sharing of practice, issues and solutions through learning opportunities
3. Members of the network will respect the opinions and views of other members and conduct themselves at all times on a professional level.
4. Confidentiality will be maintained on any issues considered confidential in any discussions. Any other issues will be communicated openly to the SEND community and stakeholders.

Governance Arrangements:

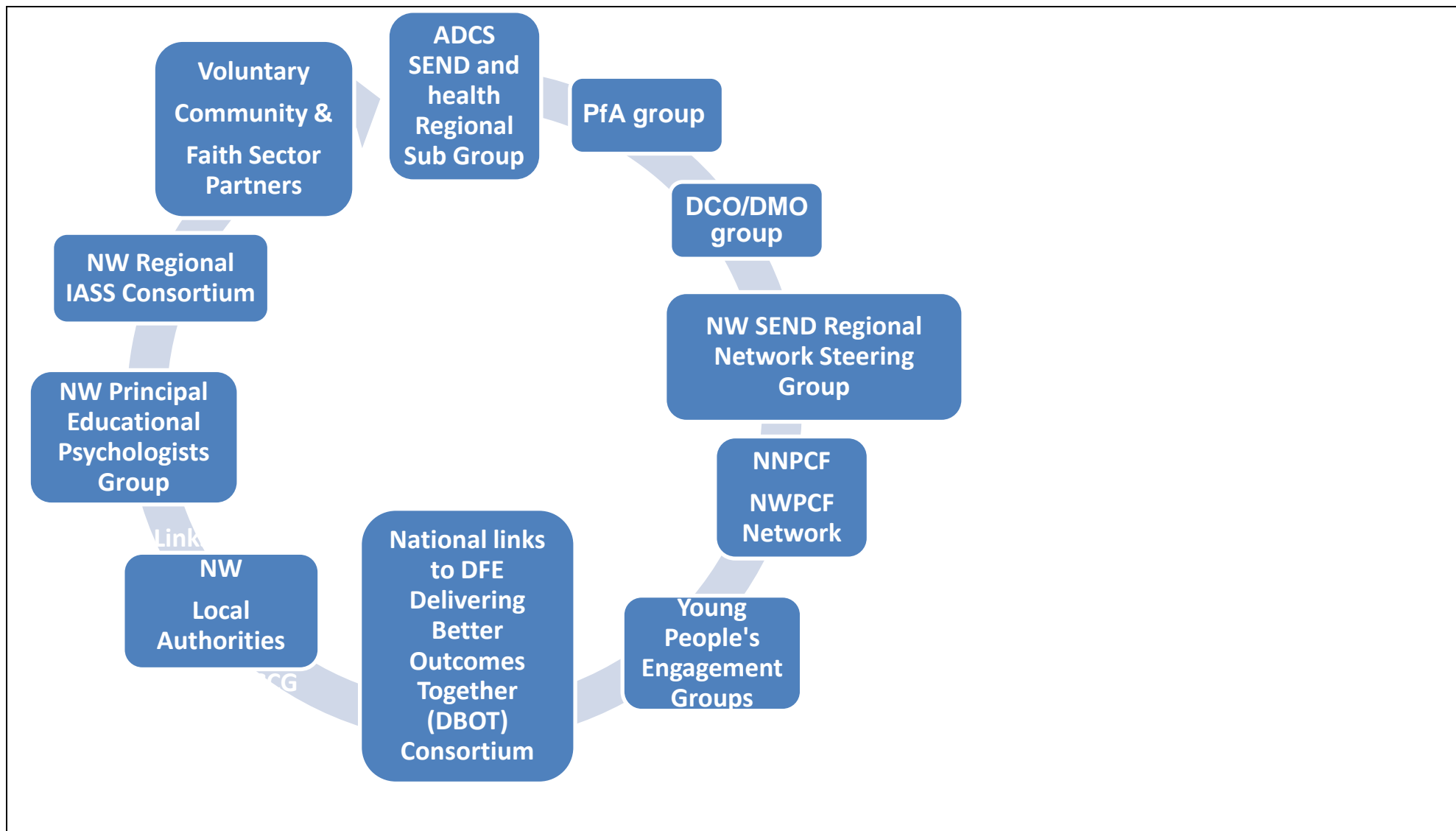
- The NW SEND Regional Network is accountable to the Department for Education. The NW SEND Regional Network reports to the NW Association of Director of Children Services (ADCS) SEND and health sub group. This is an established Network of Local Authority Children's Services SEND Leads and Health Leads. The governance through the ADCS subgroup ensures that the SEND Regional Network delivers against local and regional priorities. This also enables the SEND Regional Network to identify emerging themes, address these with the support of the ADCS Subgroup to deliver a robust and sustainable platform for SEND Delivery and Accountability across the North West Region. The ADCS (Health and SEND sub-group) oversight of the NW SEND Regional Network is achieved through liaison with the Chair (Karen Dolton, Executive Director of Children, Young People and Culture, Bury) and their quarterly meetings.

- The SEND Regional Network Steering Group provide strategic direction for delivering the NW SEND Regional Network. The NW SEND Regional Network delivery partners are Oldham, Trafford and St Helens. Their role is to facilitate and enable the development of a sustainable NW SEND Regional Network. This relies on all partners to co-produce the desired outcomes and take a shared responsibility in the development, promotion and participation of the wider network. The budget for the network is held by Oldham. The Steering group is chaired by Rochdale Council.
- The agenda for the sub-group meetings and the activities of the NW SEND Regional Network which is co-ordinated by the Steering Group. The Steering group meets alongside each quarterly ADCS sub-group meeting
- Regional and National partners are linked to, and participate to deliver, the priorities for the North West SEND Regional Network through one or all of the following work strands:
 - Association of Director of Children's Services (ADCS) SEND and health sub group
 - NW SEND Regional Network Steering Group
 - Delivering Better Outcomes Together (DBOT) consortium
 - Mott MacDonald
 - NW SEND Regional Newsletters
 - Website: <https://www.nwsend.network/>
 - Regular training, networking and workshop events planned around the priorities identified across the NW partnerships.

Three sub-regions are designated with leads highlighted:

- **Blackburn with Darwen**, Blackpool, Lancashire and Cumbria
- Bolton, Bury, **Manchester**, Oldham, Rochdale, Salford, Stockport, Tameside, Trafford and Wigan
- Cheshire East, Cheshire West and Chester, Halton, Knowsley, **Liverpool**, Sefton, St Helens, Warrington and Wirral

The communication network, based on working together and two way communication, is as follows:



Regional priorities and proposed activities:

	Regional priorities	Proposed activity/support	Target Audience	Delivery format/outline content	To be delivered by	Desired outcomes	Timeline Notes/progress
A	Identification of need, assessment & planning	Learning networks considered to ensure 'natural' groupings and sustainability	SEND operational leads	Key areas of focus identified as hot topics with the potential to extend through structured discussion on related issues. To include tracking outcomes when reviewing plans / impact plans are making.	DfE Adviser and Mott McDonald i/c network co-ordinator	Response to hot topics explored and co-ordinated	Potential for learning networks to be built on as professional development networks by developing an extended peer network
	Quality EHCPs: EHCP processes, smarter outcomes & impact	Moderation groups / Learning networks	EHC plan writers	Workshop: Timeliness & quality Writing outcomes Ensuring balance of input and streamlining Education, Health and Care Evaluating impact of plans Annual reviews	DfE Adviser and Mott McDonald i/c network co-ordinator	High quality EHCP processes and plans developed through a self-improving system. Annual review process fully embedded and progress to outcomes recorded	Training in Lancs: 5.9.18 Regional training: 29 & 30.10.18, 12 & 13.11.18 10 & 14.12.18 Training in Liverpool: 14 & 17.5.19 Explore email forums/virtual networks e.g. LO leads, SENDIASS
	Journey of a plan	Plan development	Blackpool Rochdale St Helens: SEN caseworkers Schools rep	Workshop – Mapping the process through review of plans in relation to everyone engaged, time commitment, etc.	CDC (A. Gardiner)		St Helens 25.9.18

	Regional priorities	Proposed activity/support	Target Audience	Delivery format/outline content	To be delivered by	Desired outcomes	Timeline Notes/progress
			EP Health professionals DCO/DMO Social care Parent carer				2 nd workshop – Rochdale 30.11.18
B	Provision planning: Inclusion SEN support Sufficiency / Budgets High needs funding	Building links	School improvement services Teaching schools	What LA expects schools to provide Regional placement commissioning review	Cheshire East leading	Clarity for families	Engage Local Offer leads in initial exploration April 2019 – Review by Mott McDonald SEN purchasing system – 1.5.19 Provider meeting – June 2019 Consider mapping spend across LAs
C	Joint working	Building productive relationships with health Regional event	SEND leads and partners: PCF, LA SEN leads, social care leads, CCG commissioners with responsibility for the SEND	Conference event with a focus on participation. Keynote – Dame Christine Lenehan Presentations – POINT, DCO, Transforming Care, CAMHS	NHSE NWNNPCF Contact NW SEND regional network	Each local area to have 3 bold steps for action Shared learning improves outcomes for all through identification of areas for development	Delivered on 24.5.18

Regional priorities	Proposed activity/support	Target Audience	Delivery format/outline content	To be delivered by	Desired outcomes	Timeline Notes/progress
Improving access and inclusion in the early years	Joint working in action	agenda, DMO/DCO	Workshop to showcase examples of good practice	CDC NHSE NWNNPCF Contact NW SEND Regional network	and key priorities.	7.12.18 Priority access for areas with a WSOA
	A strategic approach to SEND	SEND regional leads NHS regional leads Transforming care teams Local area teams	Develop SEND self-view framework of key indicators to feed into NW DCS peer challenge via BPN Challenge Forums SEND data dashboards	Network co-ordinator + ADCS (SEND and health sub group)	Establish social care link – Manchester?	
	Continue to progress the Early years action learning set	Early years leads – LA, health, PCF	Action learning set 5 to identify issues and jointly problem solve building on national policy, review of best practice from NW, self-review and priority setting to develop local area action plans.	CDC/Network co-ordinator Early Years/SEND partnership	Self improving system in conjunction with partners using early years audit tool. Early years peer support network	Early years peer review – applications by Oldham (conducted), Warrington, Cheshire East, Bury to LGA

	Regional priorities	Proposed activity/support	Target Audience	Delivery format/outline content	To be delivered by	Desired outcomes	Timeline Notes/progress
						continues to evolve. Improvement in practice promoting access and inclusion.	Early years SEND partnership launched new programme of activity in Leeds – Jan 2019. NW selected as a region for support. ALS – December 2019 17.6.19 19.11.19 Specialist support allocated to: Manchester – Local offer (CDC) Warrington/Wirral/Che shire East – SLCN pathways (The Communication Trust) Cumbria – Whole setting SEND (nasen) Oldham – Working with parents (Contact)
D	Strengthening co-production a) Parents carers, PCFs	Build on increased PCF governance locally and regionally to continue to	Parents/carers PCF's Local area partners Contact	To be negotiated with NWPCF Steering Group i/c with Contact adviser	NWPCF Steering group with support from Contact and NNPCF	Parent carer voice strengthened locally, regionally and nationally	

	Regional priorities	Proposed activity/support	Target Audience	Delivery format/outline content	To be delivered by	Desired outcomes	Timeline Notes/progress
	<p data-bbox="232 1241 405 1353">b) Children & young people</p>	<p data-bbox="439 288 595 352">improve co-production</p> <p data-bbox="439 440 640 1233">To ensure that PCF's and their issues, successes and challenges continue to be represented at the NW Network Steering group meeting, ensuring that the focus of the group remains on embedding a clear and sustainable strategy for partnership working.</p> <p data-bbox="439 1281 629 1385">Scope current participation groups</p>	<p data-bbox="663 515 864 770">SEND officers Health reps Parents carers NW PCFs SENDIASS NNPCF Contact</p> <p data-bbox="663 1241 853 1385">Children & YP's participation groups/forums</p>	<p data-bbox="887 387 1267 515">Steering groups liaise to review ways in which co-production takes place in the most effective ways</p> <p data-bbox="887 1265 1256 1369">Mapping of activity re SEND to complement Children in Care Councils</p>	<p data-bbox="1312 403 1514 738">Network co-ordinator in conjunction with parent carers, forums, their representatives and support organisations.</p> <p data-bbox="1312 1241 1480 1385">S. Dunne, Youth Focus NW Bury Stars</p>	<p data-bbox="1547 515 1738 699">A means of evidencing co-production in action is developed.</p> <p data-bbox="1547 1241 1760 1353">Regional profile of children/YP's participation</p>	<p data-bbox="1783 555 2074 627">Steering group model co-production</p> <p data-bbox="1783 1241 2040 1385">Meetings at Youth Focus NW 28.8.18, 31.10.18, 3.12.18, 16.1.19</p>

	Regional priorities	Proposed activity/support	Target Audience	Delivery format/outline content	To be delivered by	Desired outcomes	Timeline Notes/progress
	engagement/ Participation	Development of NW YP's Voice network to shape the SEND agenda, priorities and future provision	Children and young people's engagement / participation group managers/leaders, SEND managers and commissioners with responsibility for cultural change	Working group to explore development potential Focus on: YP's barriers to strategic participation Structures and models to support Identifying how this can work regionally	Regional co-ordinator KIDS/CDC Making Ourselves Heard / CDC	AWESOME re-invigorated	Event 16.1.19 Sharing practice workshop – 20.5.19, St Helens KIDS working with St Helens Ches. West & Chester Trafford
E	Preparation for adulthood pathways	PfA / Transitions network extended. Linking PfA outcomes into EHC	Transitions officers Schools Colleges Employers Training providers Transitions officers EHC plan writers	Learning network meetings on 6.6.18, 2.10.18, 21.3.19 The Edge, Wigan Updates from local area inspection findings. Local activity Hearing young people's experiences PfA sub group	PfA NW SEND regional network co-ordinator PfA	Providers and advice givers better equipped to work with YP and parents Sharing learning and best practice across the region	2018-19 Outcomes Employment pathways 2019-20 PfA Link with health/CCG mapping Regional employer engagement conference – Sept 2019

	Regional priorities	Proposed activity/support	Target Audience	Delivery format/outline content	To be delivered by	Desired outcomes	Timeline Notes/progress
		assessment and planning Development of an outcome framework that measures PfA outcomes Employment /Pfa pathways Supported internship profile developed regionally	Health commissioners Young people, Parents/carers Statutory and voluntary sectors			Clarity and transparency around 16 – 25 offer across the region. Achieving outcomes so plans are no longer required and can be ceased. Culture change – ensuring SEND is everyone’s business.	Applications to support LAs across the regions to use the PfA audit tool to improve post education life outcomes for YP with SEND: Halton St Helens Cheshire East
F	Engagement of social care with SEND reforms	Social care regional practice development group	Children and adult social care lead and senior practitioners	Practice sharing workshop e.g. development of local protocols re engagement with SEN assessment & planning officers, social care timelines, short breaks.	CDC	Self sustaining support	2.7.18 – Identifying solutions to social care challenges
G	Engagement with all stakeholders in SEND agenda	Newsletter	Families Parent carer forums	Monthly email Also sent as pdf to all local offer leads Request for case studies and good news stories.	Network co-ordinator et al	All stakeholders informed of activity, resources etc.	Newsletter circulated monthly.

	Regional priorities	Proposed activity/support	Target Audience	Delivery format/outline content	To be delivered by	Desired outcomes	Timeline Notes/progress
		Website Link with GM SEND activity	LA, health and social care services Schools & colleges VCS SENDIASS & IS	You said...We did feedback summary.	POINT		Website regularly updated
H	Keeping in touch with Dfe.	Responding to identified national priorities as these emerge	All stakeholders	Regular contact with DfE SEND adviser.	Network co-ordinator	All stakeholders fully informed.	On-going National network meetings: 22.6.18 S. Fryer & A. Robinson 10.9.18 C. Hamer & M. Kemp 27.11.18 C. Hamer & S. Fryer 22.1.19 C. Hamer & M. Kemp 7.3.19 C. Hamer & J. Hicklin 7.5.19 19.9.19 7.11.19 14.1.20

	Regional priorities	Proposed activity/support	Target Audience	Delivery format/outline content	To be delivered by	Desired outcomes	Timeline Notes/progress
							12.3.20
I	Personal budgets	Sharing learning	Key stakeholders	Learning from Accelerated Working Group shared across the region.	Michelle Morris & Charlotte Aspden, Salford.	Increased use of personal budgets	Check targets set for personal health budgets
J	Peer review	Link with DCS peer review – SEND element					Explore model of peer review: Meeting with P. Bullen re E & W Midlands and E of England model – 21.8.18 Pete Chilvers presented to ADCS (Health & SEND sub group) 4.10.18 Design group to develop a NW model – 2.5.19, Rochdale

Other events:

National Trial workshop – 25.3.19

Appendix: Roles and responsibilities

NW SEND regional co-ordinator:

Programme planning and delivery:

NW SEND regional network delivery plan 2018-20

- Work with Steering group to identify regional priorities.
- Work with DBOT consortium and delivery partners to develop work programme based on regionally identified priorities
- Report on the fourth rapid response survey to establish progress and priorities in delivering, and embedding the SEND elements of the Children & Families 2014, priorities for action/areas for developing and practice for sharing plus identification of key contacts for each LA area
- Create and maintain a regularly up-dated Delivery plan of proposed, planned and delivered activity and budget breakdown in conjunction with Steering Group
- Participate in national meetings for regional network co-ordinators – Planning and partnership working
- Co-ordination of delivery of events, workshops etc.

Support:

- Individual & targeted support in conjunction, where appropriate, with DfE SEND Regional Adviser
- Identify sources of support and negotiate to meet requirements and desired outcomes
- Delivery of training to support workforce development and practice development
- Support structures for collaboration / sharing including existing networks and groups
- Build new and self-sustaining support across the region e.g. children and young people's participation
- Co-ordination of, and support for, regional, sub regional and local area events

Communications:

- Maintain an up to date list of contacts for Newsletter
- Horizon scanning for events, information and content for Newsletter
- Produce and circulate monthly newsletter
- Respond to follow up enquiries
- Circulate national communications to SEND leads
- Act as a single point of contact for information, sharing learning, networking and queries providing information for the website
- Briefings as required for network members

Relationships with Consortium members:

- Regular links with DfE SEND Regional adviser, NW Sector led improvement team, Chair ADCS (SEND and Health sub-group)
- Preparation of agendas and support for NW SEND Regional Network Steering Group and ADCS (SEND and Health sub-group) + reporting at meetings

POINT:

NW SEND regional network delivery plan 2018-20

Rapid response survey:

- Production and collation of survey findings

Website:

- Maintenance of website content including newsletters, presentations post event, etc.
- Response to enquiries